



Hannibal

Glacial Theatre

Austria | Sölden | Rettenbach Glacier
Friday, April 24, 2009 | 07.30 pm | Nightfall

Be there to see it live. And if you have ever seen it, you will want to come back...
A coproduction by Sölden, Red Bull and Lawine Torrèn in the ninth year.

"Twilight. The Rettenbach glacier in Sölden is preparing to participate as an actor in the world's probably largest stage play which will start in a few minutes. Surrounded by infinite silence the glacier plunges his white sides into the icy blue, just to jump as a snow-covered bugaboo out of an avalanche at Hannibal's Africans a little later", so the atmosphere moments before the performance is starting at 3,000 meters .

lawine torrèn

dance theatre machines media

press release 1.0

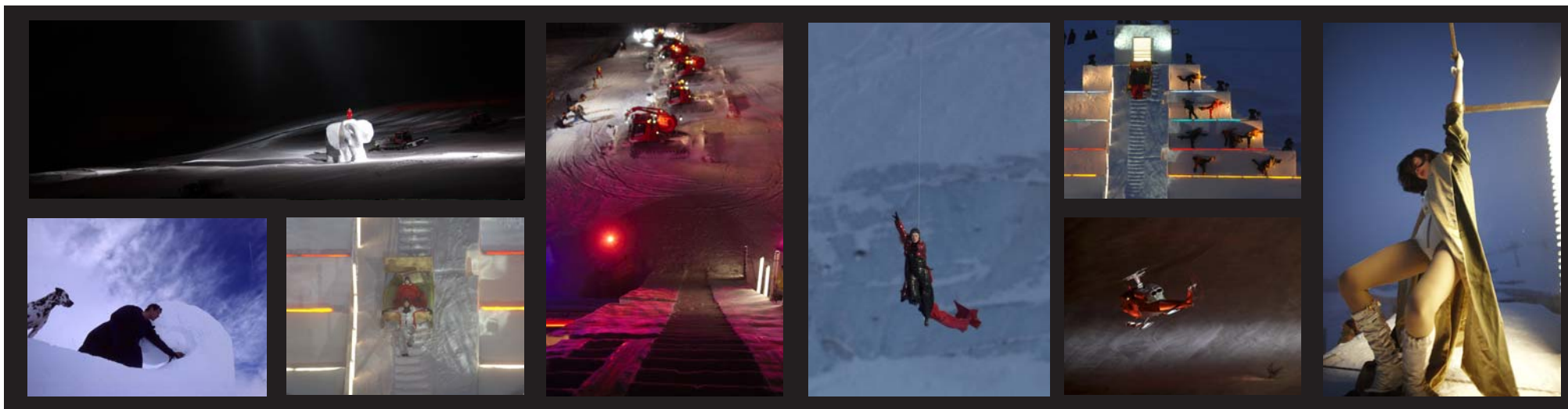
© 01 | 2009 lawine torrèn

www.torren.at



All pictures taken from the performance Hannibal 2008.

© Wolfgang Kirchner, Ernst Lorenzi, Eric Brasseur und Bernhard Spoettel



Glacial Theatre Hannibal

Directed by Hubert Lepka, the artists' network Lawine Torrèn, top athletes and hundreds of locals become the narrators in this breathtakingly spectacular glacial theatre – a modern parable about the striving for power, love, intrigues and world politics.

The impressive massif of the Rettenbach Glacier will be serving as the stage for this multi-media play. As unbelievable as Hannibal's manoeuvre to traverse the alps with tens of thousands of warriors and 37 elephants seems, as unique is the production of Lawine Torrèn at 3,000 meters above sea level: A fulminating and at the same time delicate choreography for snow groomers, aeroplanes, helicopters, motocross bikes, skidoos, skydivers, skiers and dancers – all in all more than 300 participants, which are animating the antique legend in combination with previously unknown lighting effects, moving music compositions, breaking news by Karthago TV and scenic pyrotechnics.

"In this all-encompassing digital world, where the last remains of darkness are denatured by street lights, Hannibal is an atavistic attempt to make first-hand experience of our history, the conflicting nature of our occidental culture, and the fragility of an existence that is based on former roman dominance – 3,000m above sea level, in all weathers and with all senses", director Hubert Lepka describes his plan.

The production's success bases on the reports of yearly 5,000 to 8,000 visitors, that have seen Hannibal on the glacier. The producers – Sölden, Red Bull and Lawine Torrèn – feel confident that this project could become a kind of Everyman of the Alps. Be there to see it live. And if you have ever seen it, you will want to come back.

The Story

218 BC: Departing from Carthage, Hannibal, along with 60.000 men and 37 elephants, crossed the Alps in only ten days. He overcame steep mountains, sudden changes in weather, avalanches and seized Italy. Despite his maximum military advantage, Hannibal forbore from conquering Rome. A withdrawal with historical consequences: a Roman army led by Scipio defeated Hannibal in the battle of Zama. Rome assumed the power and sphere of influence in the Mediterranean area, while Carthage sank into insignificance.

Booking of tickets

www.soelden.com/main/EN/SD/WI/Events/Hannibal
Ötztal Tourismus Sölden +43-5254-5100

Creation	Lawine Torrèn
Text	Joey Wimplinger
Narrator	Harald Krassnitzer
Composition	Peter Valentin
Choreography	Donna Jewell
Light design	Frank Lischka
Video	Stefan Aglassinger
Production manager	Klaudia Gründl de Keijzer
Concept & direction	Hubert Lepka
Constructions	Bergbahnen Sölden
Initiator	Ernst Lorenzi

Media contact

Julia Lepka-Fleischer
Hinterland. Bureau for communication
julia.lepka@hinterland.cc
0043 / 664 / 2109659